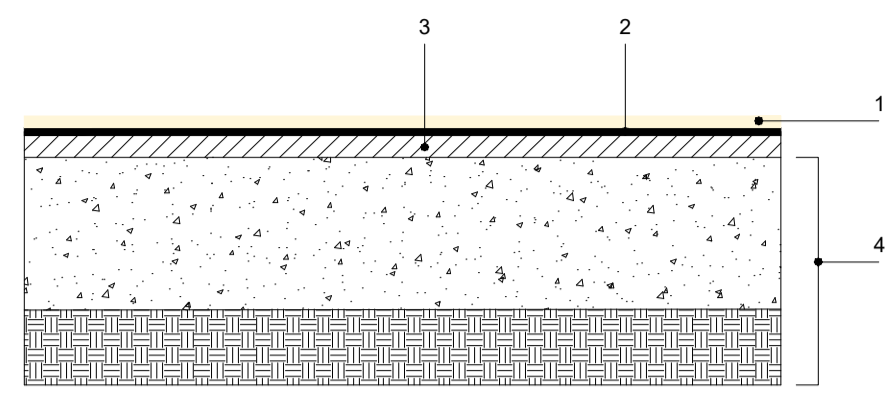


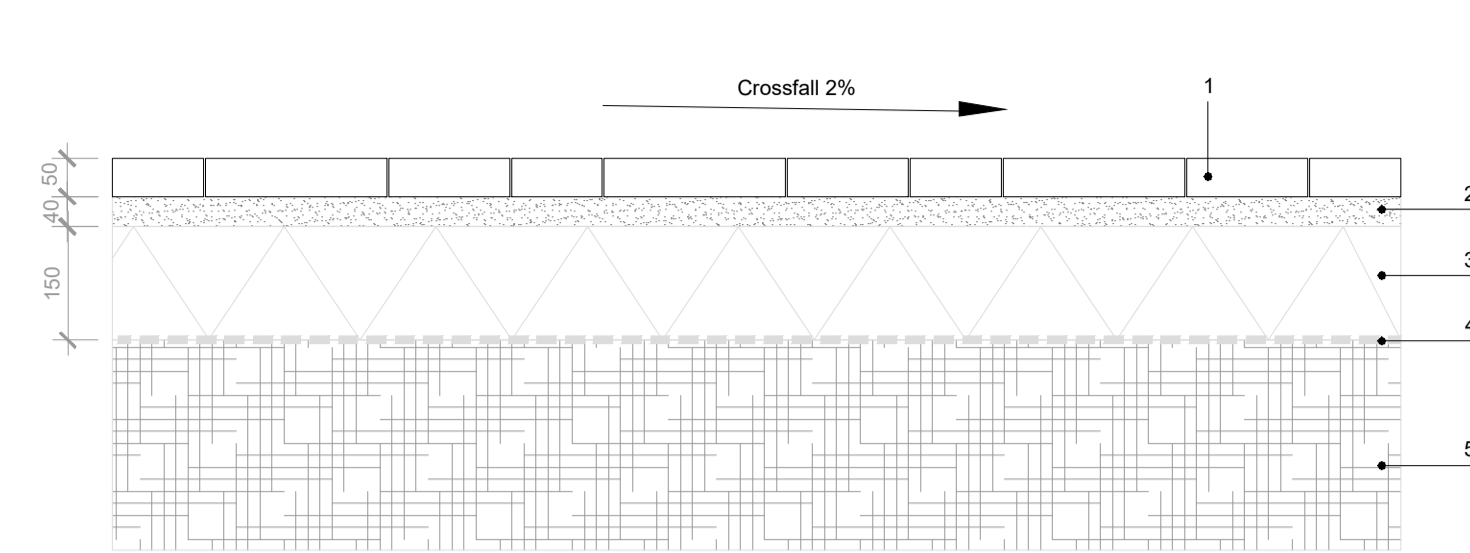
**Resin-bound Aggregate**  
Scale 1:10



**NOTES:**

- Aggregate surface dressing (Addastone or similar); Depth: 2-6mm; 4-6mm Long Flake Golden Spar aggregate  
A Surface Protector Coat (e.g. Addastone Surface Protector or similar), is recommended following laying to protect surface from staining and to aid cleaning / chewing gum removal.
- Sealer (Addacryl or similar)
- 30mm of 10mm Open Graded Macadam Surface Course (Max 125 Pen) to BS 4987 - 1: 2003 ref 7.2
- Subbase to Engineer's detail

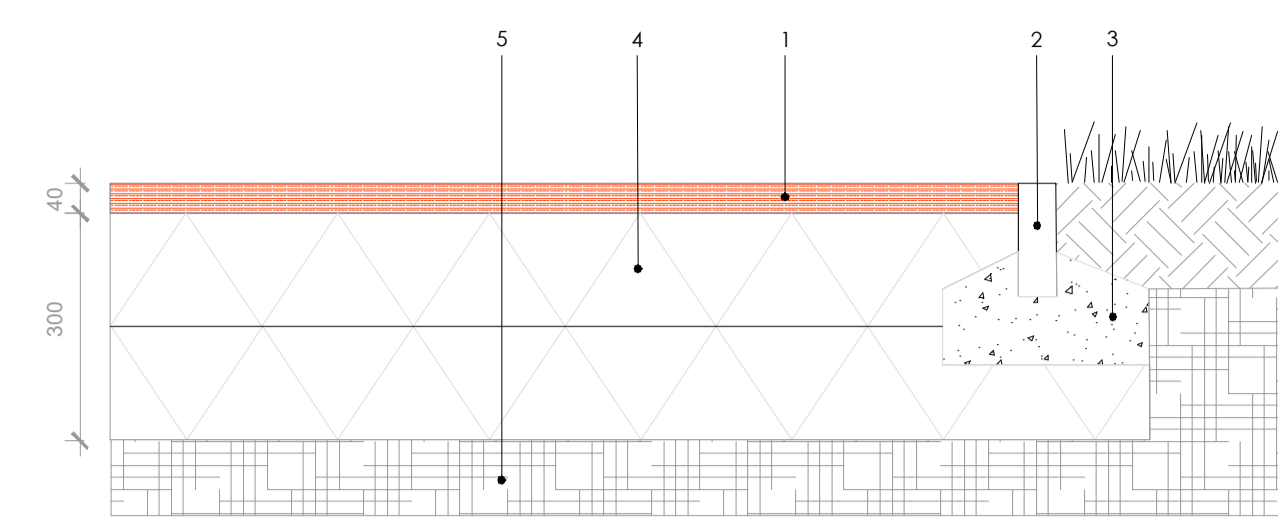
**Concrete Block Paving**  
Scale 1:10



**NOTES:**

- Unit block paving with 2.5mm joints filled with dried kiln jointing sand Kilsaran 'Newgrange' Block Paving or similar and approved. 50x120x160, 50x160x160, 50x240x160mm (3 size mixed). Colour - Silver Granite / Black Granite; Paving surfacing to be laid in accordance with BS 7533:4:2006
- Compacted naturally occurring sharp sand or 2.6mm crushed stone grit laying course
- Well compacted Clause 804 stone to falls/crossfalls required
- Geotextile layer (Terram or similar & approved)
- Well compacted sub grade to appropriate level & profile to engineers approval

**Wetpour Safety Surface**  
Scale 1:10

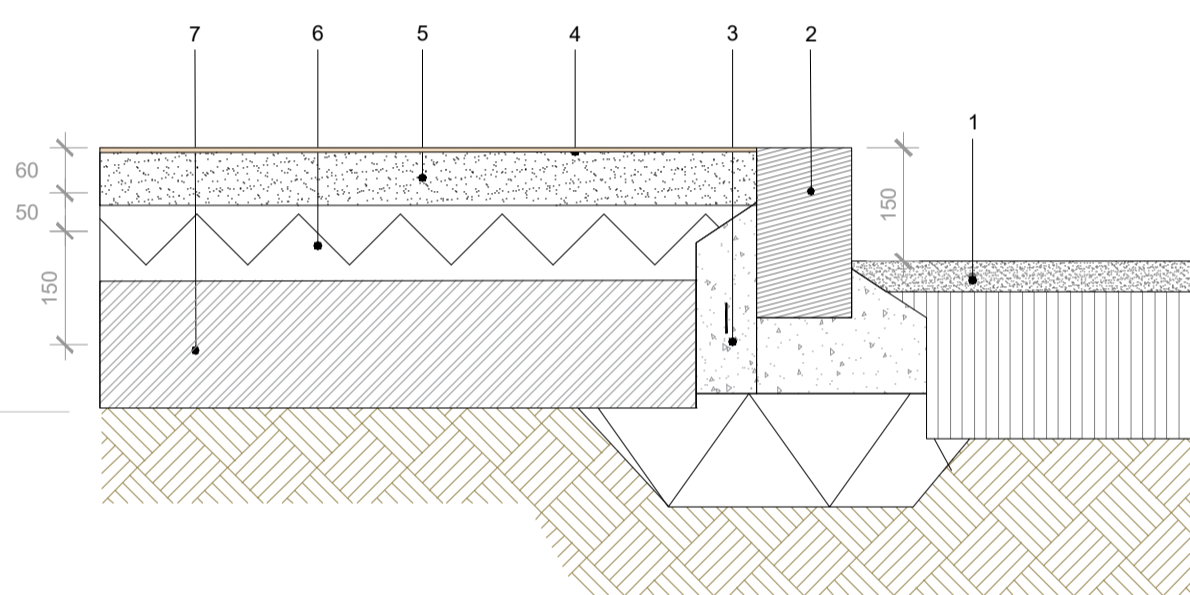


**NOTES:**

- Wet Pour at a depth of 40mm - Critical Fall height (CFH) <1.3m. Top of kerb and wetpour level to be flush (tolerance +0mm-5mm).  
Wet Pour surfacing to BS EN1177:1998 (Playtop® or equal and approved) consists of two layers: a base layer of black S.B.R. rubber, a coloured top layer of 1-4mm EPDM rubber granules (colour EPDM through full thickness of system).
- 150 x 50 Flat Top Precast Concrete Kerb - only where no other edge restraint exists
- Concrete haunching to secure Kerb
- Compacted 804 stone at 300mm depth, laid with local deviations no greater than 10mm under a 3m straight edge in any direction.
- Compacted subgrade

A critical fall height of 1.3m is assumed. Should the height change due to revised play equipment, the thickness of the safety surfacing should be amended also as per manufacturer's instructions. Approval to be sought from landscape architect prior to any equipment changes.

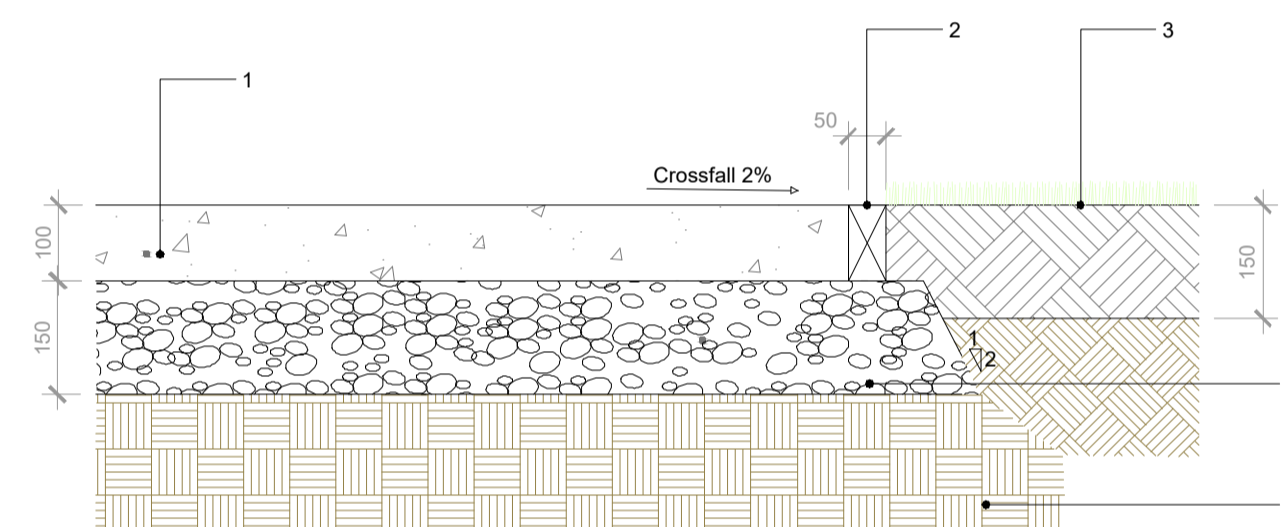
**Brushed Concrete with Kerb and Asphalt Road**  
(Trafficated Permeable Paving)  
Scale 1:10



**NOTES:**

- Asphalt Road Surface; laid to a fall of 1:60; wearing course, base course and sub-base all to Engineer's detail.
- Reconstituted Granite Kerb 255x125x915mm (Tobemore &/or similar approved); Reconstituted Granite Country kerb; Granite Aggregate
- Insitu concrete with dowels at 900 centers.
- Broom brushed concrete, or similar approved Surface Course; Depth: 18mm; 6mm clean stone aggregate;
- Binder Course size AC 10 open graded asphalt; 100mm min. Well compacted Sub-Base Clause 804 stone to appropriate level & profile Engineers' approval.
- Well compacted Type 3 granular sub-base to SHW clause 805 or 4/40, 4/20mm graded crushed concrete aggregate to BS EN 12620 or locally available secondary or recycled aggregates which comply with the above specification surface blinded with 2/6.3mm graded crushed concrete aggregate to BS EN12620

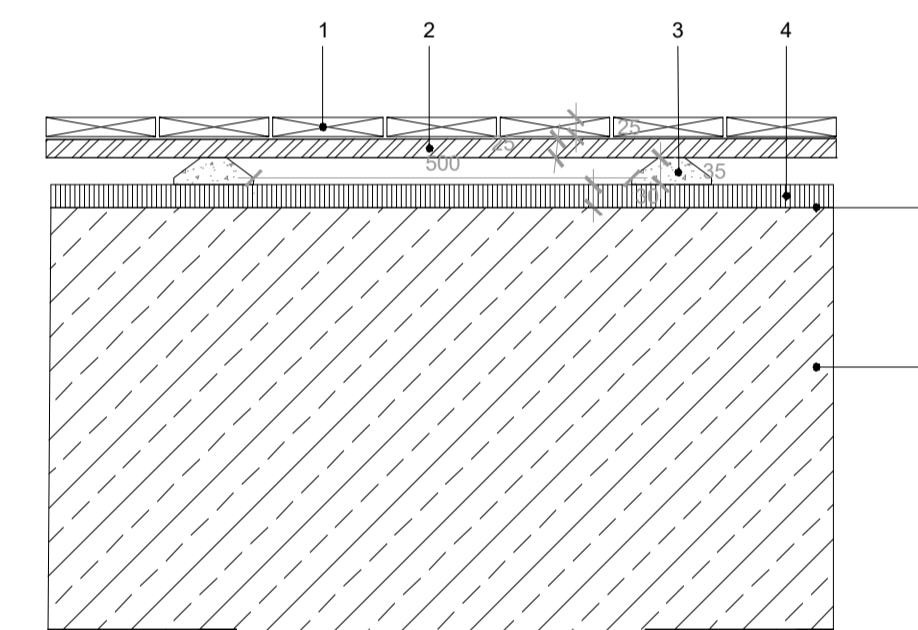
**In-situ Concrete Path**  
Standard  
Scale 1:10



**NOTES:**

- 100mm Concrete to Clause 1106 Sandblasted Finish; Joints to have a maximum spacing of 3m, joint sealant to be Colpor 200 (expandite limited) and/or similar approved
- Timber shuttering to be removed on completion
- Topsoil reinstated to edge of path
- 150mm min. Well compacted Sub-Base Clause 804 stone to appropriate level & profile Engineers' approval
- Well consolidated or undisturbed ground; Acceptable material to appendix 6/1 National Roads Authority - Construction details

**Roof Timber Deck**  
Scale 1:10



**NOTES:**

- Hard wood decking 25x145
- Backing supports (25mm)
- Concrete bearer (35 mm)
- 3 part asphalt
- Isolating membrane
- Concrete



KeyPlan\_Scale 1:2000

- This drawing is intended to show landscape architectural proposals only. Please refer to Architects and Engineer's drawings for relevant details of buildings, structures, roads, parking, etc.
- The copyright of this drawing is vested with Murray & Associates. This drawing may not be copied or reproduced without written consent.
- All materials referred to on this drawing, including plant species, are indicative and subject to change following detailed site investigation. Significant changes, if any are required, will be referred to the relevant authority for agreement.
- This drawing is not suitable for use for construction purposes.
- Discrepancies to be referred to Murray & Associates for clarification.

**murray & associates**  
landscape architecture

16 The Seapoint Building, mll@murray-associates.com  
44-45, Convent Road, www.murray-associates.com  
Dublin 3, D03 RFE3 +353 (0)1 854 0900

0	16/03/22	IFP	HT	MB
REV	DATE	REVISION	DRAWN	CHECKED

CLIENT  
Lismore Homes Ltd.

PROJECT TITLE  
GA2 Baldoyle

SHEET TITLE  
Landscape Details Sheet 4 of 4

SHEET NO.  
1819\_PL\_D\_04\_IFP

SCALE  
As Shown

STAGE  
Planning

SHEET SIZE  
A1

REVISION  
0

DATE  
16/03/22